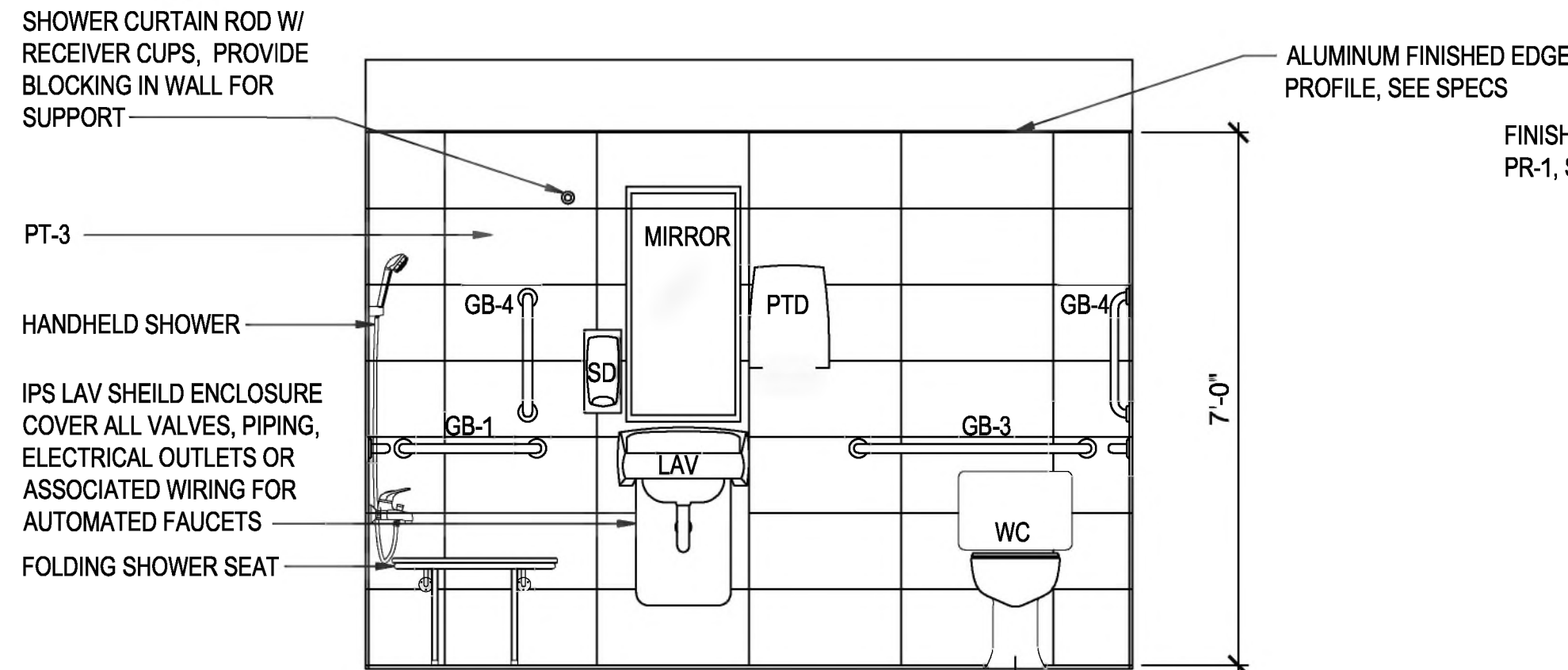
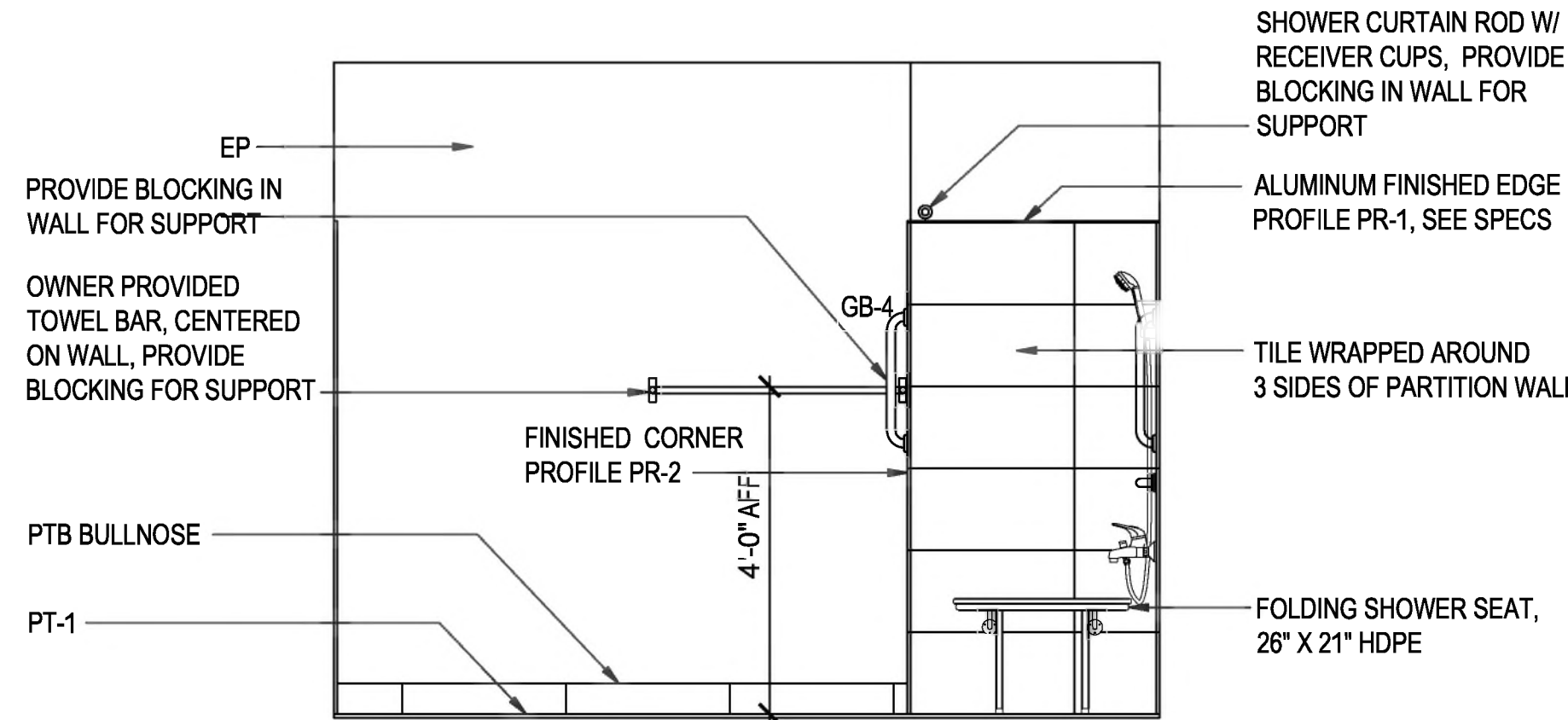


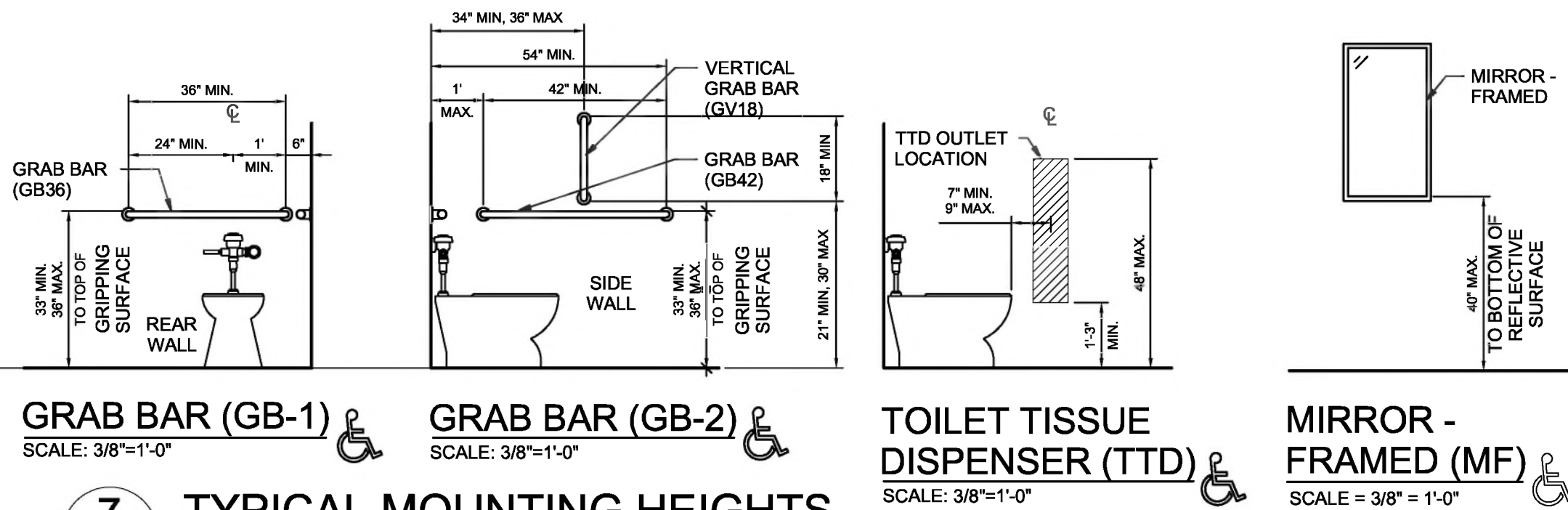
5 NEW BATHROOM FLOOR FINISHES, (BID ALTERNATE G-1)
A-111 SCALE: 1/2" = 1'-0"



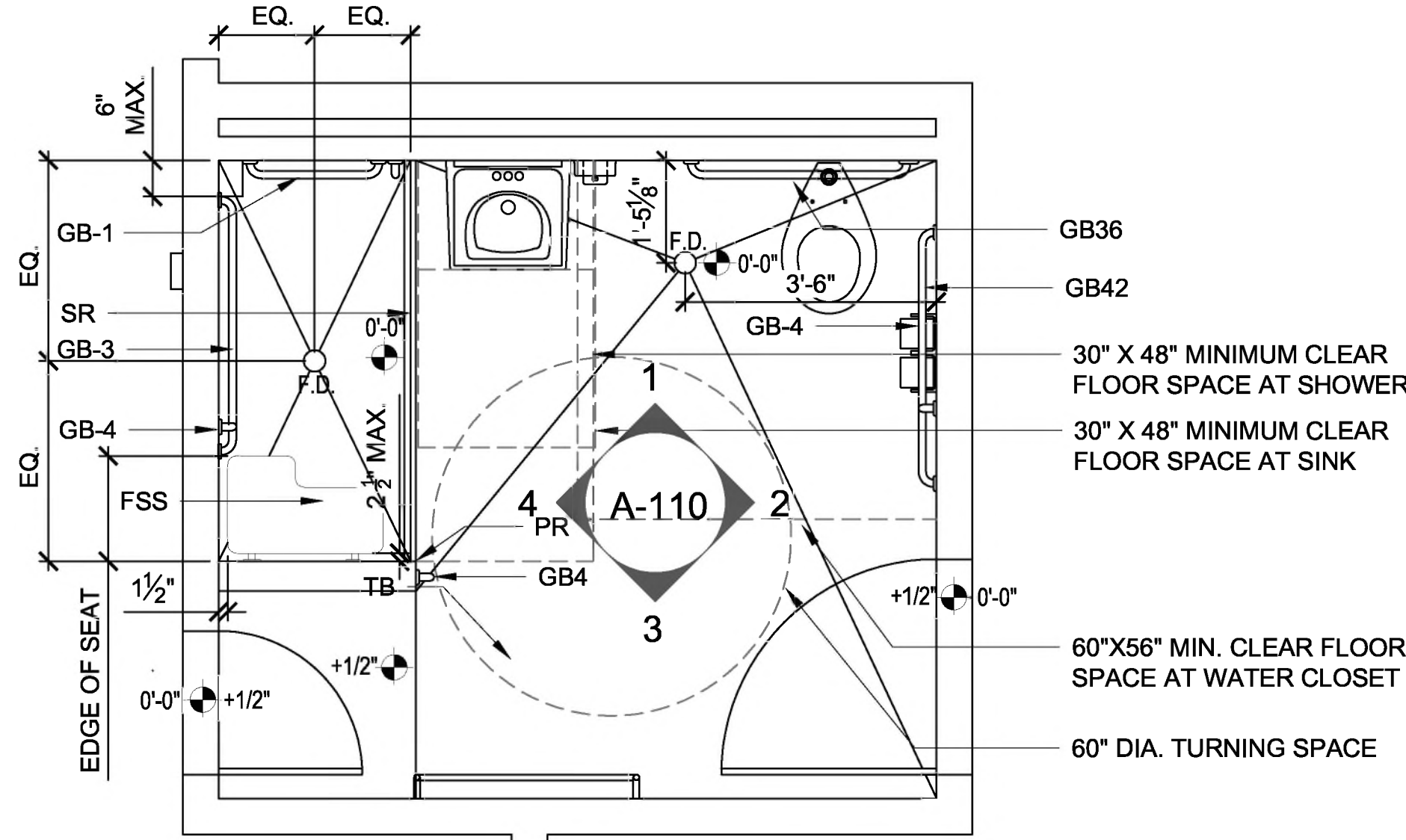
1 ENLARGED ELEVATION, (BID ALTERNATE G-1)
A-111 SCALE: 1/2" = 1'-0"



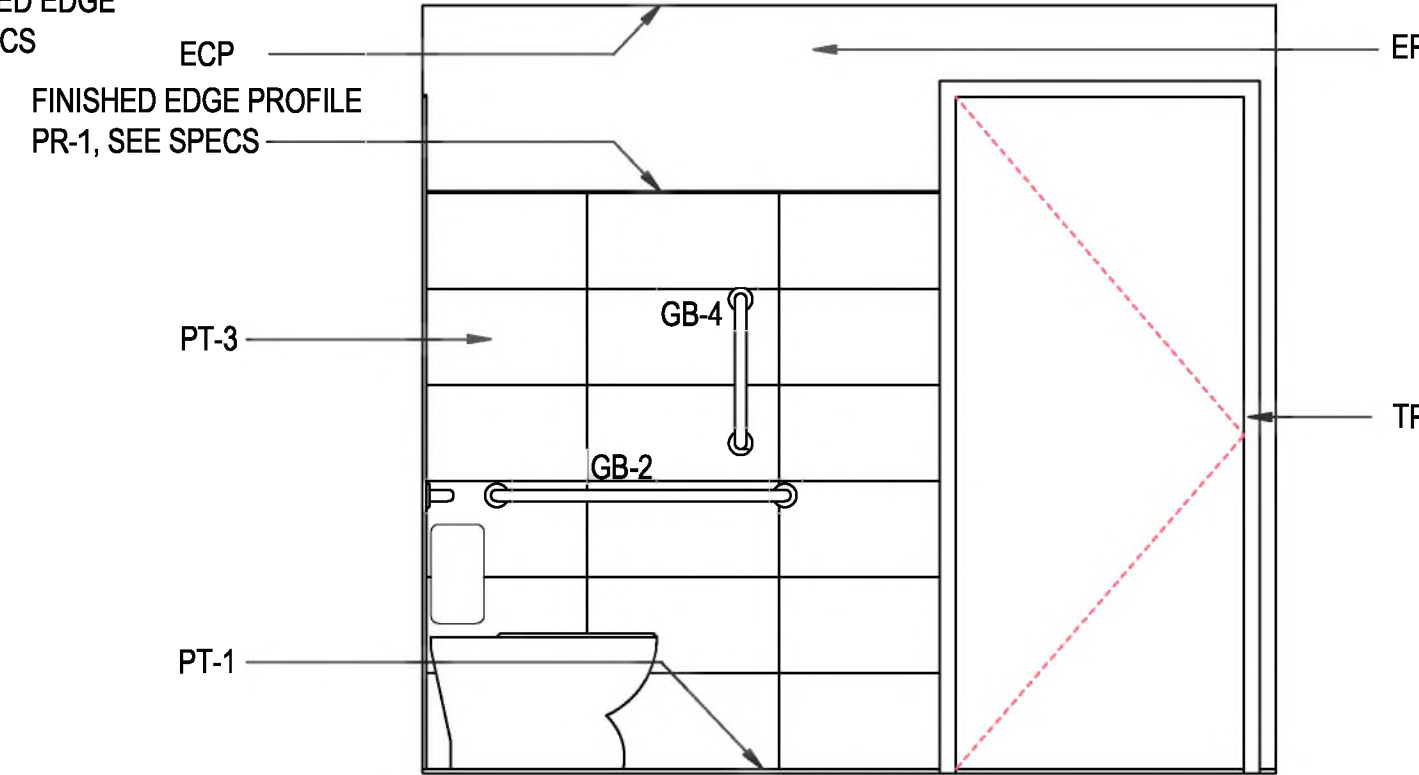
3 ENLARGED ELEVATION, (BID ALTERNATE G-1)
A-111 SCALE: 1/2" = 1'-0"



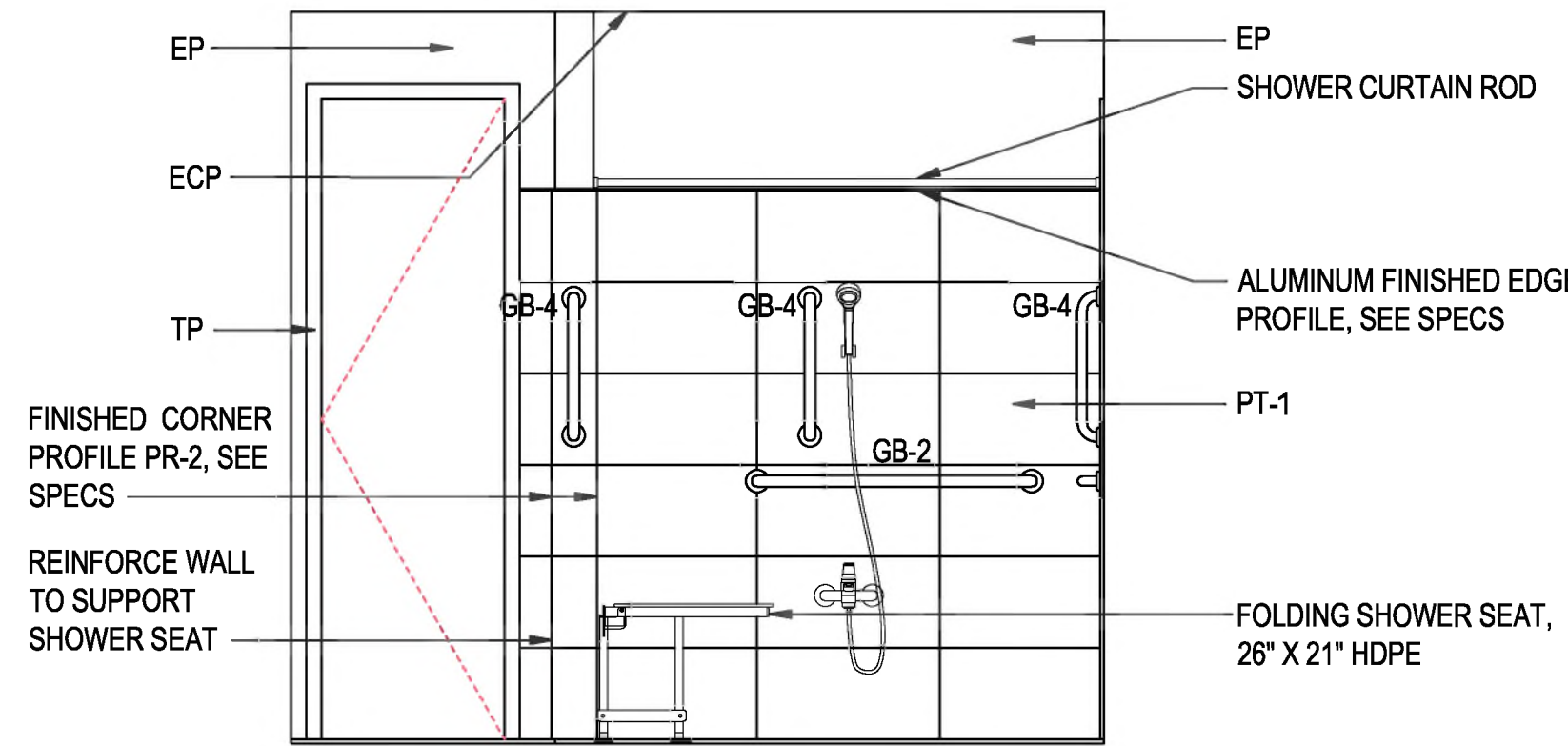
7 TYPICAL MOUNTING HEIGHTS
A-111 SCALE: 3/8" = 1'-0"



6 NEW FLOOR PLAN NOTATIONAL, (BID ALTERNATE G-1)
A-111 SCALE: 1/2" = 1'-0"



2 ENLARGED ELEVATION, (BID ALTERNATE G-1)
A-111 SCALE: 1/2" = 1'-0"



4 ENLARGED ELEVATION, (BID ALTERNATE, (G-1)
A-111 SCALE: 1/2" = 1'-0"

SHEET NOTES:

1. THIS SHEET INDICATES TYPICAL AND ACCESSIBLE MOUNTING HEIGHTS AND ADDITIONAL CRITERIA.
2. THE ACCESSIBLE CRITERIA INDICATED ON THIS SHEET ARE IN COMPLIANCE WITH THE ADA STANDARDS FOR ACCESSIBLE DESIGN (2010).
3. DETAILS ON THIS SHEET INDICATING ACCESSIBLE REQUIREMENTS ARE MARKED WITH THE "INTERNATIONAL SYMBOL OF ACCESSIBILITY".
4. VERIFY MANUFACTURER'S RECOMMENDED ACCESSIBLE MOUNTING LOCATIONS WITH THOSE LISTED ON THIS SHEET.



LAVATORY NOTES:

1. ALL NEW AND EXISTING LAVATORIES SHALL HAVE NEW GRAB BARS, NEW SOAP DISPENSERS, NEW PAPER TOWEL DISPENSERS, NEW SANITIZER DISPENSER, NEW MIRRORS ABOVE SINK, AND ALL NEW FIXTURES.
2. REFER TO SHEET A-102 FOR ADA MOUNTING HEIGHTS.

ACCESSORY NOTES:

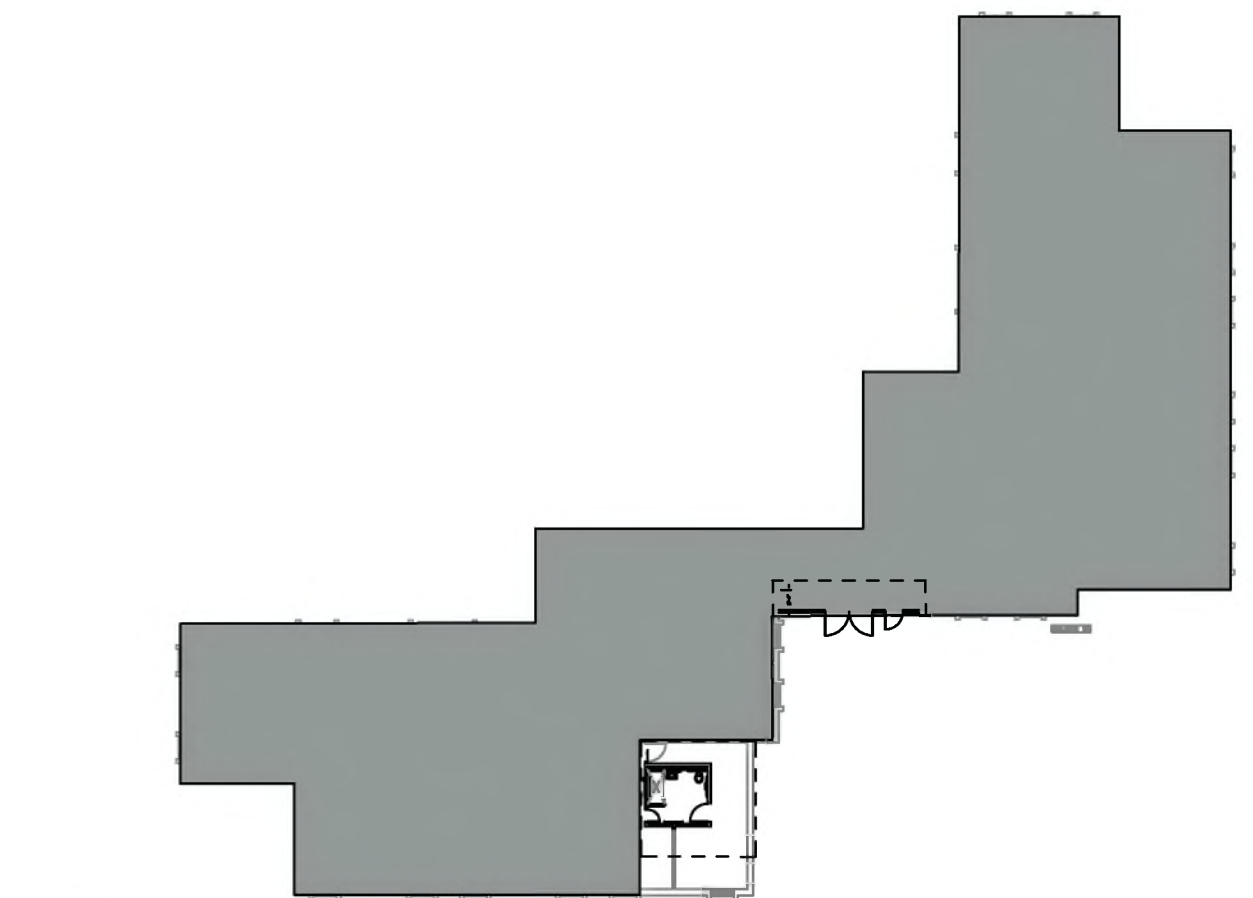
1. TP AND PAPER TOWEL DISPENSER TO BE PROVIDED BY OWNER AND INSTALLED BY CONTRACTOR. PROVIDE BLOCKING.
2. PROVIDE BLOCKING FOR GRAB BARS, TOWEL BAR AND SHOWER CURTAIN.

ACCESSORY ABBREVIATIONS

FSS	ADA FOLDING SHOWER SEAT
GB-1	24" GRAB BAR
GB-2	42" GRAB BAR
GB-3	36" GRAB BAR
GB-4	18" VERTICAL GRAB BAR
M	MIRROR
PTD	PAPER TOWEL DISPENSER
SD	LIQUID SOAP DISPENSER
SND	SANITARY NAPKIN DISPOSAL
SR	SHOWER CURTAIN ROD
TB	TOWEL BAR
TD	TOILET TISSUE DISPENSER

FINISH LEGEND

ECP	EPOXY CEILING PAINT
EP	EPOXY PAINT
GR-1	GROUT FOR FLOORS
GR-2	GROUT FOR WALLS
PR	PROFILE
PT-1	PORCELAIN TILE FLOOR
PT-2	PORCELAIN TILE MOSAICS SHOWER FLOOR-3" X 3"
PT-3	PORCELAIN TILE WALLS-12"X 24"
PTB	PORCELAIN TILE BULLNOSE-4" X 24"
TP	TRIM PAINT



7 KEY PLAN
A-111 SCALE: 1/32" = 1'-0"



REVISIONS

RAYMOND
ENGINEERS, PA
316 WEST MILLBROOK ROAD, SUITE 201
RALEIGH, NORTH CAROLINA
OFFICE: (919) 872-7886
WWW.RAYMONDGLOBAL.COM
LICENSE #53143 CON C4282

ATLANTEC
ENGINEERS, PA
3321 BLUE RIDGE ROAD, SUITE 113
RALEIGH, NC 27612
(919) 571-1111
1505 ST. JAMES PLACE
DURHAM, NC 28804
(919) 327-3305

PREPARED FOR:
NC DEPARTMENT
OF INSTRUCTION
SCO #
24-27792-01A

GOVERNOR MOREHEAD SCHOOL
SPRINKLER, ADA TOILET, LIGHTING
UPGRADES FOR DORMS A, B, & D
RALEIGH, NC

CONTENTS:
BATHROOM
FINISH PLANS
AND INTERIOR
ELEVATIONS

DATE:
05/27/2025
FOR
CONSTRUCTION
DESIGNER:
ENGINEER:

SHEET NO.
A-111
OF